



DHI LAB PRODUCTS

## DHI MIXED PIGMENTS

Mixtures of phytoplankton pigments useful for QA of HPLC analyses

Pigment analyses by High-Performance Liquid Chromatography (HPLC) are routinely used for determining the spatial and temporal variability of phytoplankton populations. Quality Assurance/Quality Control (QA/QC) should be performed to ensure that the HPLC analyses are of a high quality. The QA/QC process also helps to quickly identify and rectify any problems that may occur. Our mixed pigments are very useful for such QA/QC.

### TWO TYPES OF PIGMENT MIXTURES

The mixed pigments are especially suited to test the separation and precision of your HPLC. Two different types of mixture are available:

- PPS-MIX-1: especially suitable when analysing common pigments in phytoplankton samples. The chlorophyll *a* concentration is 3-5 µg/mL
- PPS-MIX-2: especially suitable when analysing samples with pigments near the detection limit. The chlorophyll *a* concentration is 0.1-0.2 µg/mL

Each lot contains at least: chlorophyll *c*<sub>2</sub> & *c*<sub>3</sub>, peridinin, 19'-but- & 19'-hex-fucoxanthin, neoxanthin, prasinoxanthin, violaxanthin, diadinoxanthin, alloxanthin, diatoxanthin, zeaxanthin, lutein, MV & DV chlorophyll *b*, MV & DV chlorophyll *a*, α- & β-carotene. The content varies slightly in different lots and may also contain pheophorbide *a*, pheophytin *a*, chlorophyllide *a*, MgDVP, canthaxanthin, chlorophyll *c*<sub>1</sub>, as well as other pigments.

### DHI LAB PRODUCTS FOR PIGMENT ANALYSES

The mixed pigments cannot be used for calibration. Instead, we produce more than 35 different pure pigment standards. These are especially suitable for HPLC calibration, when analysing pigments. They are shipped in dry ice worldwide, along with a Certificate of Analysis.



For filtration of water samples for pigment analyses, we supply Whatman GF/F filters. Furthermore, we offer Teflon Polytetrafluoroethylene (PTFE) syringe filters with a pore size of 0.2 µm. These are especially suitable for re-filtering samples extracted in organic solvents (for example, for HPLC analyses).



For more information, please visit our homepage.

### DHI MIXED PIGMENTS

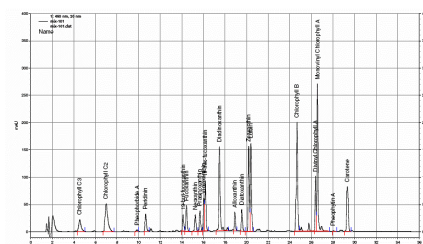
#### BENEFITS

Essential for quality assurance of pigment analyses when controlling:

- HPLC performance and precision
- Pigment elution order
- Separation and identity of the peaks

#### FEATURES

- Each lot contains at least 20 different phytoplankton pigments
- Dissolved in 90% acetone
- Distributed in 1 mL ready-to-use HPLC vials with nitrogen atmosphere
- Delivered with a Certificate of Analysis



#### DHI LAB Products

Agern Allé 5  
DK-2970 Hørsholm  
Denmark

+45 4516 9200 Telephone  
+45 4516 9292 Telefax

[c14@dhigroup.com](mailto:c14@dhigroup.com)  
[www.labproducts.dhigroup.com](http://www.labproducts.dhigroup.com)